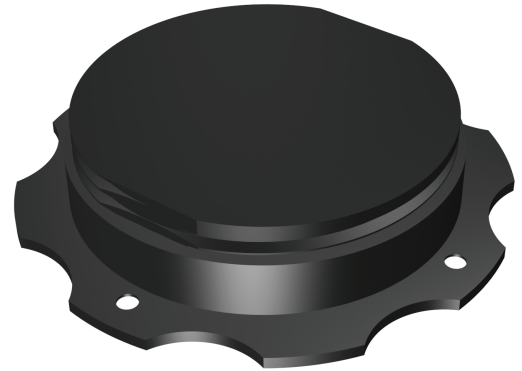




M-POWER-WLC-US-10-Qi-SS INSTALL GUIDE

METRO 10W WIRELESS CHARGING UNIT

UNDER-SURFACE MOUNTED 10W WIRELESS CHARGER SET FOR ANDROID AND IPHONE WIRELESS ENABLED CELL PHONES (Qi CERTIFIED)



M-POWER-WLC-US-10-Qi-SS

- 1** Rout a 4.015" (102.000mm) diameter hole to 0.078" (2.000mm) below the surface.
- 2** Adjust height of sub-surface wireless charger so that when the top of the charging unit is touching the underside of the top surface, the adjustment sleeve/mounting bracket is just touching the bottom of the substrate.
- 3** Screw the adjustment sleeve/mounting bracket into place with the screws provided (or with 5/8" long #6 screws).
- 4** Attach decal to top surface indicating the exact position of the wireless charging unit.
- 5** Connect power supply cord to the wireless charging unit and plug the transformer box into a standard 120 VAC 60Hz receptacle.

